



Title of Change:	Change in carrier tape design for SSOP16 products	
Effective date:	16 March 2018	
Contact information:	Contact your local ON Semiconductor Sales Office or <Kiyoshi.Mita@onsemi.com>, <Hiroaki.Shimizu@onsemi.com>, <Charles.Francia@onsemi.com >	
Type of notification:	This Product Bulletin is for notification purposes only. ON Semiconductor will proceed with implementation of this change upon publication of this Product Bulletin.	
Change category:	<input type="checkbox"/> Wafer Fab Change <input type="checkbox"/> Assembly Change <input type="checkbox"/> Test Change <input checked="" type="checkbox"/> Other <u>Tape and Reel Change</u>	
Change Sub-Category(s):	<input type="checkbox"/> Manufacturing Site Change/Addition <input type="checkbox"/> Material Change <input type="checkbox"/> Datasheet/Product Doc change <input type="checkbox"/> Manufacturing Process Change <input type="checkbox"/> Product specific change <input checked="" type="checkbox"/> Shipping/Packaging/Marking <input type="checkbox"/> Other: _____	
Sites Affected:	ON Semiconductor Sites: ON Tarlac City, Philippines	External Foundry/Subcon Sites: None

Description and Purpose:

The purpose of the new design is to minimize the movement of the devices inside the pockets of the reel.

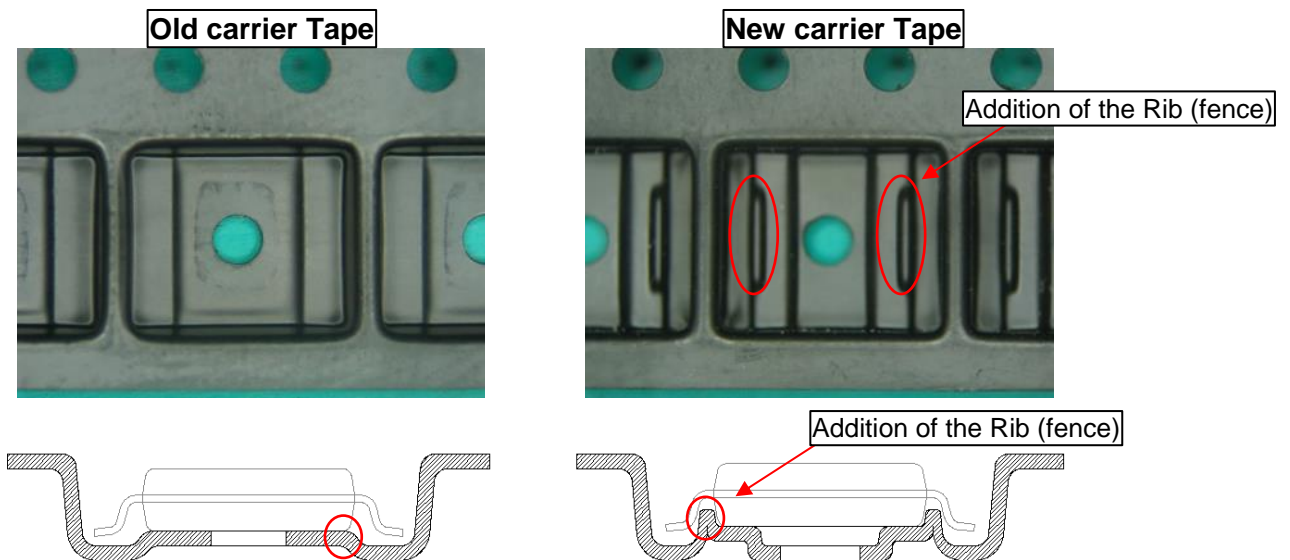
Rib (fence) were provided in the pocket to suppress movement of the device.

There are no changes to the pocket tape or cover tape material or vendor, and there are no changes to external tape dimensions, or final reel quantities, packing specifications.

This change will be effective W11, 2018. The Site will make changes after existing material consumption.

Detailed Change Description

The reel being used in the process and the new designed reel were compared and the photos are shown below:



The device is centered and the new pedestals prevents of the movement of the device.

**List of Affected Standard Parts:**

LA2616V-TLM-H	LB11660RV-TLM-H	LC72725KV-UONK-TLM-E	LV5761V-TLM-E
LA7161BV-TLM-E	LB11660RV-W-AH	LC72725NV-TLM-E	LV5768V-A-TLM-E
LA7161V-A-TLM-E	LB11867FV-TLM-E	LC89091JA-AH	LV5768V-TLM-E
LA72910V-TLM-E	LB11867FV-TLM-H	LV2105V-TLM-E	LV5769VZ-TLM-E
LA72910V-TLM-H	LB11867FV-W-AH	LV3327PV-TLM-H	LV8019V-TLM-E
LA72914V-TLM-H	LB11867RV-TLM-E	LV5061V-TLM-H	LV8068V-TLM-H
LA73076V-TLM-E	LB11867RV-TLM-H	LV5066V-TLM-H	LV8400V-TLM-E
LA77000V-TLM-E	LB11867RV-W-AH	LV5068V-TLM-H	LV8401V-TLM-E
LA7793V-TLM-E	LB11961V-TLM-E	LV5069JA-AH	LV8402V-TLM-E
LA79200V-TLM-E	LB11961V-TLM-H	LV5710V-TLM-E	LV8405V-TLM-E
LA8160V-TLM-E	LB1936V-TLM-E	LV5725JA-AH	LV8800V-TLM-E
LA8161V-TLM-E	LB1973JA-AH	LV5725JAZ-AH	LV8800V-TLM-H
LA8662V-TLM-E	LB8503V-TLM-E	LV5743V-TLM-E	LV8860PV-TLM-H
LB11660FV-TLM-E	LB8503V-W-AH	LV5744V-TLM-E	LV8860V-TLM-H
LB11660FV-TLM-H	LC72725KVS-TLM-H	LV5749NV-TLM-E	LV8862JA-AH
LB11660FV-W-AH	LC72725KV-TLM-E	LV5749V-TLM-E	
LB11660RV-TLM-E	LC72725KV-UKW-TLM-E		

Appendix A: Changed Products

Product	Customer Part Number
LA72910V-TLM-H	
LA72914V-TLM-H	
LA73076V-TLM-E	
LA79200V-TLM-E	
LB11660FV-TLM-E	
LB11660FV-TLM-H	
LB11660FV-W-AH	
LB11660RV-TLM-E	
LB11660RV-TLM-H	
LB11660RV-W-AH	
LB11867FV-TLM-E	
LB11867FV-TLM-H	
LB11867RV-TLM-E	
LB11867RV-TLM-H	
LB11961V-TLM-E	
LB11961V-TLM-H	
LB1936V-TLM-E	
LB1973JA-AH	
LB8503V-TLM-E	
LB8503V-W-AH	
LC72725KV-TLM-E	
LC89091JA-AH	
LV3327PV-TLM-H	
LV5068V-TLM-H	
LV5069JA-AH	
LV5710V-TLM-E	
LV5725JA-AH	
LV5725JAZ-AH	
LV5749NV-TLM-E	
LV5768V-A-TLM-E	
LV5769VZ-TLM-E	
LV8019V-TLM-E	
LV8068V-TLM-H	
LV8400V-TLM-E	
LV8401V-TLM-E	
LV8402V-TLM-E	
LV8405V-TLM-E	
LV8800V-TLM-E	
LV8800V-TLM-H	
LV8860PV-TLM-H	
LV8860V-TLM-H	
LV8862JA-AH	