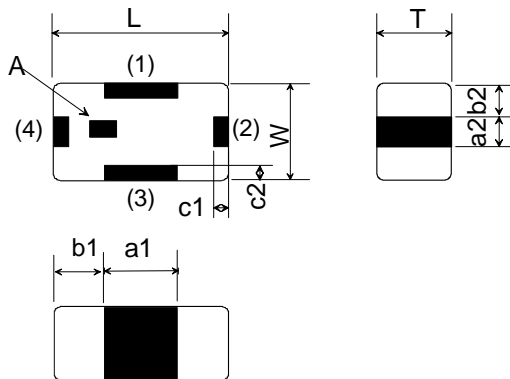


BAND PASS FILTER

1. Characteristics (at $-40 \sim +85 \text{ }^{\circ}\text{C}$)

Part Number	LFB182G45SG9B740
Nominal Center Frequency	2450.00 MHz
Pass Band Range (BW)	$f_0 \pm 50.00 \text{ MHz}$
Insertion Loss in BW	1.80 dB max. at $25 \text{ }^{\circ}\text{C}$ 2.10 dB max. at $-40 \sim +85 \text{ }^{\circ}\text{C}$
Attenuation (Absolute value)	27.0 dB min. at 800.00 ~ 900.00MHz 34.0 dB min. at 4800.00 ~ 5000.00MHz 34.0 dB min. at 7200.00 ~ 7500.00MHz
Ripple	0.70 dB max.
V.S.W.R. in BW	2.00 max.
Power Capacity	500 mW max.

2. Construction,Dimensions&Marking



(in mm)

Mark	Meaning
A	Directional Input Mark

Mark	Dimension	Mark	Dimension
L	1.6 ± 0.1	b1	0.45 ± 0.15
W	$0.8 + 0.2 / - 0.1$	b2	0.25 ± 0.15
T	0.6 ± 0.1	c1	0.20 ± 0.15
a1	0.70 ± 0.15	c2	0.20 ± 0.15
a2	$0.30 + 0.10 / - 0.15$	-	-

TERMINAL CONFIGURATION

Terminal No.	Terminal Name	Terminal No.	Terminal Name
(1)	GND	(3)	GND
(2)	OUT	(4)	IN

3. Land Pattern

